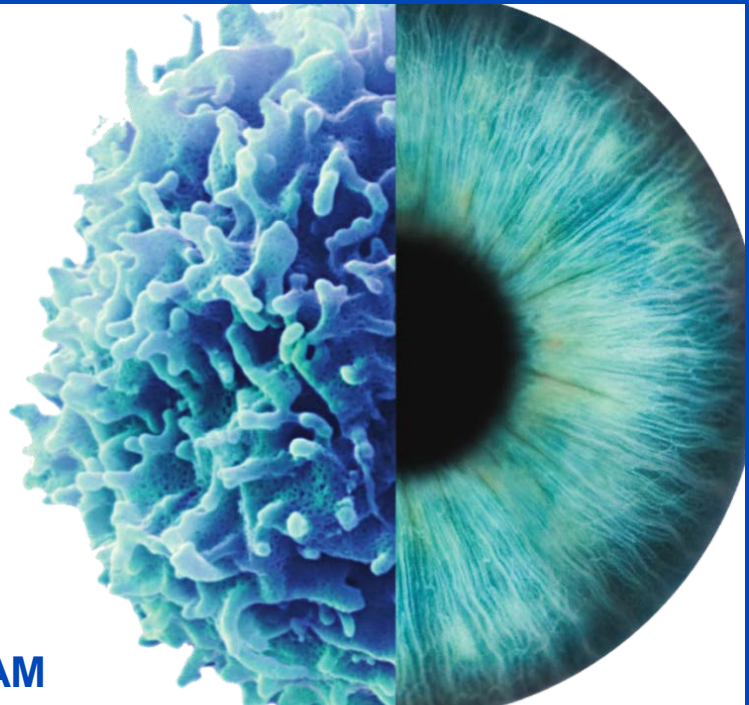


# SEEING BEYOND.

RESEARCH FOR A LIFE WITHOUT CANCER



## INTERNATIONAL PHD PROGRAM

# PiCRe

Progress in Cancer Research

*Winter Semester*  
**2017/18**

<b>12/10</b>	PhD Student Council	Elect your new PhD Student Council
<b>19/10</b>	Marc Kachelrieß	Motion management in CT and in other tomographic imaging modalities
<b>26/10</b>	Klaus Maier-Hein	Radiomics
<b>09/11</b>	Darius Tschaharganeh	Advanced mouse models to study cancer development and therapy
<b>16/11</b>	Hedda Wardemann	The power of mining antigen receptor repertoires to understand and fight diseases
<b>23/11</b>	Rudolf Kaaks	Discovery, validation and use of markers for early detection of cancer
<b>30/11</b>	Hans Hombauer	Studies on DNA replication fidelity in budding yeast
<b>07/12*</b>	Annette Kopp-Schneider	Seven deadly sins of statistics and how to avoid them
<b>14/12</b>	Hans-Reimer Rodewald	Cellular Immunology
<b>11/01</b>	Michael Milsom	Stem cells, ageing and cancer
<b>18/01*</b>	Sven Diederichs	Messages from the dark matter of the cancer genome: Long non-coding RNAs
<b>25/01</b>	Angelika Riemer	Cancer immunotherapy – recent developments
<b>01/02</b>	Frank Westermann	Cancer dependencies and synthetic lethal relationships
<b>08/02</b>	Michael Schlander	How much should we pay for cancer care?
<b>15/02</b>	Claudia Scholl	Exploiting functional dependencies in cancer for the development of targeted therapies

\* These lectures will take place in the Pathology Lecture Theater, INF 220, not at the DKFZ.

**Thursdays: 9:00 – 10:00, DKFZ Lecture Theater**  
Everyone welcome. PhD Students please register via the HCM Portal.